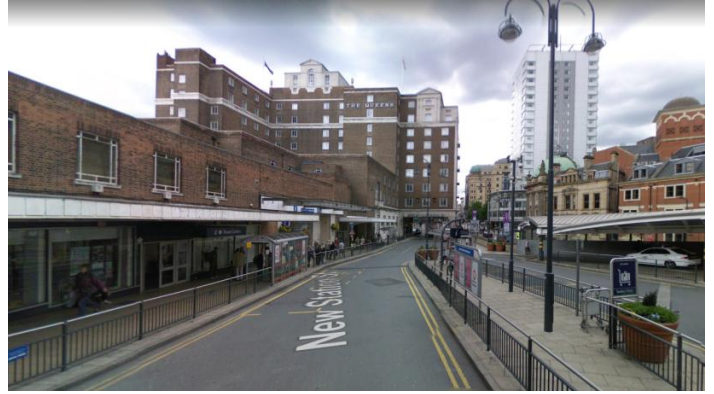


## DIRECTIONS FROM LEEDS TRAIN STATION TO ST GEORGE'S CENTRE

The Centre is a 15 minute walk from the train station. There is no parking at the centre.

Exit Leeds Train Station by the main door.

Turn left.



Cross over to Park Row.

Walk past the Park Plaza Hotel on your right.



Continue walking up Park Row until you meet The Headrow junction.

This should take about 5 minutes.



Turn left, and use the crossing in the picture to cross over to the right-hand side of the road.

You should now be walking adjacent to Leeds Art Galley.

Continue to walk along the road passing Leeds Town Hall.



Turn right after Leeds Town Hall, and walk up Oxford Place



At the top of Oxford Place, turn left onto Great George Street.

Follow the road round to the left, walking past Greggs and Veritas Wine Bar.

Leeds General Infirmary is situated on the right-hand side.



Continue walking to the end of Great George Street.

You will see St George's Church up ahead, continue walking past this on the left-hand side.



You will see Firehouse Fitness Gym located on the left-hand side of the road.

Stop when you get to the bottom of the footbridge. This is also a private car park, with entrance to St George's Church.



Our entrance is located adjacent to St George's Church Steps, through the green pedestrian gate.

You have arrived at your destination.

